



# ZILCO ENDURANCE

## EQUIPMENT CATALOGUE VOLUME 1

IF IT'S BRANDED ZILCO, IT'S BRANDED QUALITY.



[zilco.net](http://zilco.net)  





# CONTENTS

## ENDURANCE PUSH THE BOUNDARIES

With origins in Australia and New Zealand in the early 1960s, the Zilco group is now a pre-eminent supplier of equestrian products worldwide.

Zilco's staff include specialists from a variety of equestrian disciplines. This knowledge and experience, coupled with constant market research, is the driving force for our in-house design team.

Zilco have always been innovators, using modern materials with the latest ideas - all of which are tested extensively before a product is released.

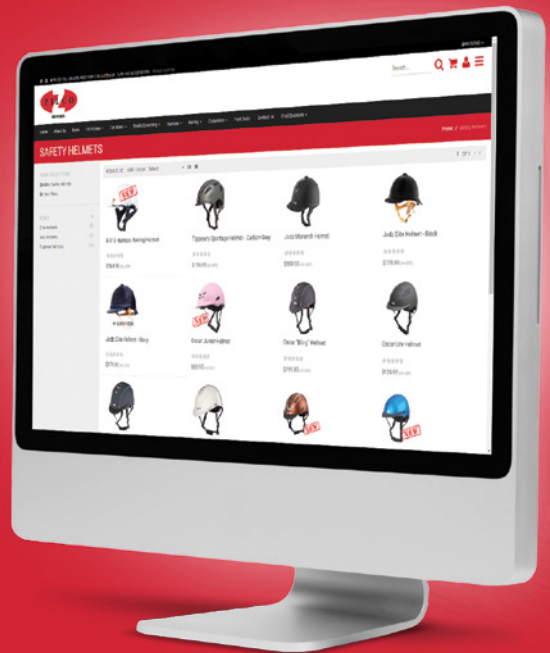
Zilco is committed to quality and customer service, whether for our own designed products or those select quality product from other manufacturers we represent.

Zilco Endurance products have been a firm favourite with discerning riders for many decades. At the core of Zilco production is attention to detail, high quality materials, meticulous craftsmanship and a thorough understanding of the demands of competitive and leisure riding, hacking and trekking.

Ultra Range _____	4
Endurance Bridles _____	6
Endurance Breastplates & Martingales _____	10
Endurance Reins _____	11
Endurance Bridle Accessories _____	12
Bridles _____	14
Reins _____	18
Running Martingales _____	20
Accessories _____	21
Bits _____	22
Headstalls & Leads _____	26
Stirrups _____	27
Headwear _____	28
Saddle Pads _____	30
Girths _____	32
Bags & Gear _____	34

# EVERYTHING YOU NEED, IN ONE PLACE!

Visit us online at [www.zilco.net](http://www.zilco.net)





**Ultra Reins**

Made with 19mm Matt finish PVC coated webbing and featuring White rubber grips with Stainless Steel fittings.

Length: 132cm long

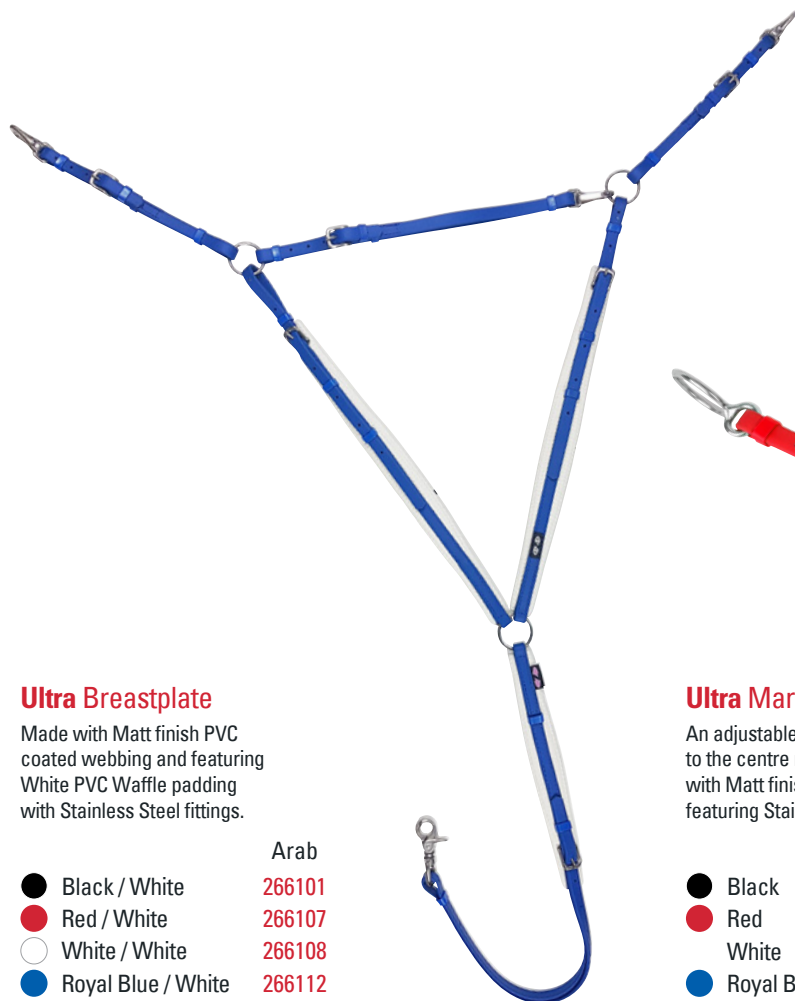
- |                      |        |  |
|----------------------|--------|--|
|                      | Arab   |  |
| ● Black / White      | 266151 |  |
| ● Red / White        | 266157 |  |
| ○ White / White      | 266158 |  |
| ● Royal Blue / White | 266162 |  |



**Ultra Bridle**

A new lighter weight halter/bridle combination made from Matt finish PVC coated webbing with white PVC waffle padding on the headpiece. Quick release snaps on cheeks allow for easy conversion from bridle to halter. This bridle has plenty of room for adjustment to fit a wide variety of horses and comes with stainless steel fittings for added strength and durability.

- |                      |        |  |
|----------------------|--------|--|
|                      | Arab   |  |
| ● Black / White      | 266001 |  |
| ● Red / White        | 266007 |  |
| ○ White / White      | 266008 |  |
| ● Royal Blue / White | 266012 |  |



**Ultra Breastplate**

Made with Matt finish PVC coated webbing and featuring White PVC Waffle padding with Stainless Steel fittings.

- |                      |        |  |
|----------------------|--------|--|
|                      | Arab   |  |
| ● Black / White      | 266101 |  |
| ● Red / White        | 266107 |  |
| ○ White / White      | 266108 |  |
| ● Royal Blue / White | 266112 |  |



**Ultra Martingale**

An adjustable martingale designed to clip to the centre ring on breastplate. Made with Matt finish PVC coated webbing and featuring Stainless Steel fittings.

- |              |        |  |
|--------------|--------|--|
|              | Arab   |  |
| ● Black      | 266201 |  |
| ● Red        | 266207 |  |
| ○ White      | 266208 |  |
| ● Royal Blue | 266212 |  |







## Marathon Bridle

The Marathon Bridle is a more traditional halter/bridle combination, with an adjustable throatlash and noseband. It features quick release snaps on the cheek straps to allow easy conversion from bridle to halter.

The Zilco Arab size has been designed to fit Arabian type horses, however this bridle offers enough adjustment to fit some larger horses. For larger European type horses, the Full Size Marathon bridle will adjust to an Extra Full Size.

This model offers comfort padding on the poll and nose, and features all stainless steel fittings.

● Black	Arab 269001	Full Size 269041	○ White	Arab 269008	Full Size 269048
● Dark Blue	269002	269042	● Royal Blue	269012	269052
● Brown	269003	269043	● Light Green	269015	269055
● Yellow	269004	269044	● Cyan Blue	269022	269062
● Dark Green	269005	269045	● Cerise Pink	269026	269066
● Purple	269006	269046	● Orange	269027	269067
● Red	269007	269047	● Royal/White/Red	269081	269091







**Deluxe 2-Part  
Bridle**

The Deluxe Endurance Bridle is a two part model that offers the option to quickly remove the brow and cheeks (bridle part), while leaving the halter part in place. This is done by simply releasing the snaps on the browband. All fittings are stainless steel.

The Halter and Bridle parts are sold separately, to mix & match colour options and create a unique look.

Designed to fit Arabian type horses, however this bridle offers enough adjustment to fit some larger horses.

- Black
- Dark Blue
- Purple
- Red
- White

Halter	Bridle
269101	269201
269102	269202
269106	269206
269107	269207
269108	269208

- Royal Blue
- Light Green
- Cyan Blue
- Cerise Pink
- Orange

Halter	Bridle
269112	269212
269115	269215
269122	269222
269126	269226
269127	269227

## Deluxe Breastplates

The Deluxe Endurance Breastplate is padded for extra comfort with a specially shaped black PVC waffle material that disperses pressure evenly and reduces chafing.

It also features lighter, stronger stainless steel snaps for easy fitting & removal, and a centre ring for attaching a martingale if required.

The Arab size will adjust to fit most horses.

	Arab	Full Size
● Black	269301	269351
● Dark Blue	269302	-
● Brown	269303	-
● Yellow	269304	-
● Dark Green	269305	-
● Purple	269306	-
● Red	269307	-
● White	269308	-
● Royal Blue	269312	-
● Light Green	269315	-
● Cyan Blue	269322	-
● Cerise Pink	269326	-
● Orange	269327	-



## Endurance Martingales

This is an adjustable martingale with lighter, stronger stainless steel fittings.

This model is designed to clip to the centre ring on all Zilco endurance breastplates. The rings feed through the reins to act like a running martingale.

● Black	269401
● Dark Blue	269402
● Brown	269403
● Yellow	269404
● Dark Green	269405
● Purple	269406
● Red	269407
● White	269408
● Royal Blue	269412
● Light Green	269415
● Cyan Blue	269422
● Cerise Pink	269426
● Orange	269427





**Deluxe Endurance Reins**

These reins are made from 19mm coated webbing. They attach to the bit with light yet strong stainless steel rein snaps and buckle together at the centre. Complete with rein stops for those who use a martingale. 132cm long, 46cm rubber pimple grips with 2.4cm hand width..

- Black 269601
- Dark Blue 269602
- Brown 269603
- Yellow 269604
- Dark Green 269605
- Purple 269606
- Red 269607
- White 269608
- Royal Blue 269612
- Light Green 269615
- Cyan Blue 269622
- Cerise Pink 269626
- Orange 269627



**R-Grip Endurance Reins**

These reins are made from 16mm webbing and feature lightweight, yet strong stainless steel rein snaps for quick and easy fitting and removal. The grips are made from soft, pliable rubber that is extremely comfortable in the hands and offer excellent wet weather grip. 150cm long, 1.6cm hand width.

- Black 269651
- Dark Blue 269652
- Brown 269653
- Yellow 269654
- Dark Green 269655
- Purple 269656
- Red 269657
- White 269658
- Royal Blue 269662
- Light Green 269665
- Cyan Blue 269672
- Cerise Pink 269676
- Orange 269677



**Woven Grip Endurance Reins**

These reins are made from 19mm webbing and feature lightweight, yet strong stainless steel rein snaps for quick and easy fitting/removal. The grips are made from woven polyester so they are strong, yet soft on the hands. 180cm long, 2cm hand width.

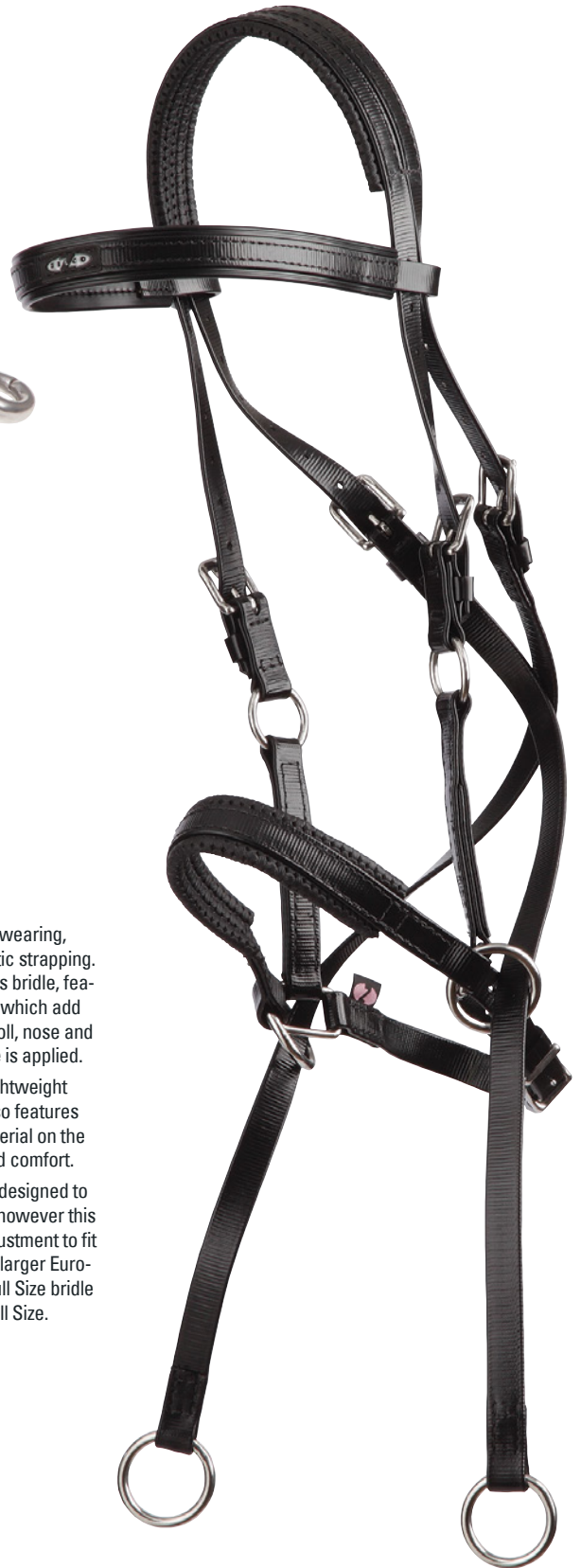
- Black 269701
- Dark Blue 269702
- Brown 269703
- Yellow 269704
- Dark Green 269705
- Purple 269706
- Red 269707
- White 269708
- Royal Blue 269712
- Light Green 269715
- Cyan Blue 269722
- Cerise Pink 269726
- Orange 269727



**Marathon Endurance Reins**

Made from a polyester material with interwoven rubber, creating a product that is lightweight yet strong, with fantastic grip in wet conditions. Featuring stainless steel trigger snaps for attaching to the bit and hook & loop fastening at the centre.

Standard 140cm **269801**  
 Long 180cm **269831**



**Bitless Bridle**

Made from Zilco's hard-wearing, easy to maintain synthetic strapping. A cross-over style bitless bridle, featuring under jaw straps, which add gentle pressure to the poll, nose and chin when rein pressure is applied.

All fittings are strong, lightweight stainless steel, and it also features PVC anti-gall waffle material on the nose and head for added comfort.

The Arab size has been designed to fit Arabian type horses, however this bridle offers enough adjustment to fit some larger horses. For larger European type horses, the Full Size bridle will adjust to an Extra Full Size.

Arab **268901**  
 Full Size **268941**



**Marathon Bit Hanger**

Replacement parts for the Zilco Marathon bridle. Made from Zilco coated webbing, the Arab size has been designed to fit most Arabian type horses however it offers enough adjustment to fit some larger horses. For larger European type horses, the Full Size will adjust to Extra Full Size. Stainless Steel Fittings. Sold as a pair.

Arab **269931**  
 Full Size **269961**



**Endurance Crupper**

Features a unique, seamless & mouldable dock that will hold any tail set. The seamless design means there are no stitches under the horses tail that might cause chafing. The special material can be wiped clean with water. Complete with strong, yet lightweight stainless steel fittings.

**269501**



**Stainless Steel  
Race Bridles**

This lightweight model features a lined headpiece, stainless steel rosettes and 13mm (1/2") cheek straps. In 9 colours with Black trim and 4 colours with White trim on brow.

	White Trim	Black Trim
● Black	672281	672301
● Dark Blue	672282	672302
● Brown	-	672303
● Yellow	-	672304
● Dark Green	-	672305
● Purple	-	672306
● Red	672287	672307
○ White	672288	672308
● Royal Blue	-	672312



**Padded  
Bridles and Cavessons**

Suitable for race, exercise and general riding. Waffle padded head, brow and nose with 16mm cheeks and stainless steel buckles. The bridle may be used with or without the Cavesson.

	Bridle	Bridle & Cavesson
● Black	672481	672531
● Dark Blue	672482	672532
● Brown	672483	672533
● Red	672487	672537
● Royal Blue	672492	672542







**Epsom**  
Bridles and Cavessons

Made from soft PN strapping with a modern matt finish. The material offers a traditional appearance as well as strength, longevity and easy maintenance. Plain browband and wide plain noseband. One size to fit Thoroughbreds.

	Bridle	Bridle & Cavesson
● Black	672801	672851
● Brown	672803	672853
● Red	672807	672857
○ White	672808	672858
● Royal Blue	672812	672862



**Training**  
Bridle & Cavesson - Dark Brown

Made from 12mm (1/2") synthetic strapping that is softer on the hands and has a matt finish resulting in a more leather-like appearance. The cavesson has a 25mm (1") nose, that is fully lined, and features soft, colour coordinated keepers with stainless steel fittings.

	Bridle	Bridle & Cavesson
● Brown	672663	672683





**Barcoo Bridle**

The Barcoo or Ring Head bridle is easily adjustable and its ability to fit a wide range of horses makes it a popular choice for stockmen and pleasure riders.

Lightweight and easy to care for, made from Zilco's SFL coated webbing. Features a padded brow and brass fittings.

		Cob	Full Size
● Black	195871	195881	
● Brown	195873	195883	



**Hackamore Bridle Head**

Lightweight and durable, it features a padded brow and headpiece for added comfort. The centre loop on the headpiece is designed for use with combination bits to attach the support string.

		Cob	Full Size
● Black	195811	195821	
● Brown	195813	195823	



**Eventing Bridle**

Made from Zilco's famous synthetic strapping which retains its flexibility over a broad temperature range, has great abrasion, tear and crack resistance and a leather look finish.

The Eventing bridle has a wide padded head and hanoverian noseband.

	Pony	Cob	Full Size
● Black	195901	195911	195921





**16mm Reins Buckle Ends**

Made from 16mm (5/8") wide webbing. Featuring 61cm (24") small pimple rubber grips. 145cm (57") Overall length.

	White Grips	Black Grips
● Black	676161	676181
● Dark Blue	676162	676182
● Brown	-	676183
● Yellow	676164	676184
● Dark Green	-	676185
● Purple	-	676186
● Red	676167	676187
○ White	676168	676188
● Royal Blue	676172	676192



**19mm Reins Buckle Ends**

Made from 19mm (3/4") wide webbing. Featuring 61cm (24") small pimple rubber grips. 145cm (57") Overall length.

● Black	676221
● Dark Blue	676222
● Brown	676223
● Purple	676226
● Red	676227
● Royal Blue	676232



**19mm PN Reins Buckle Ends**

Made from 19mm (3/4") wide soft-to-the-touch PN material, designed to match the Training Range and Epsom Bridles. Featuring 61cm (24") pimple rubber grips. 145cm (57") Overall length.

● Black/Black	676401
● Brown/Orange	676403
● Red/Black	676407
○ White/White	676408
● Royal/Black	676412



GRIP DETAIL



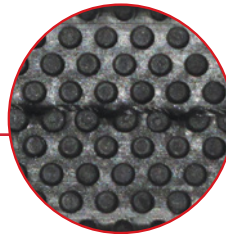
**19mm Reins Long Grip**

Made from 19mm (3/4") wide webbing, with buckle ends for connection to the bit. Featuring 78cm (30") large pimple rubber grips. 145cm (57") Overall length.

● Black 676261



GRIP DETAIL



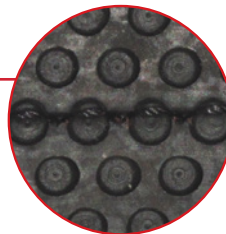
**19mm Brass Reins Buckle Ends**

Made from 19mm (3/4") wide webbing, with brass buckle ends for connection to the bit. Featuring 61cm (24") small pimple rubber grips. 145cm (57") Overall length.

● Black 676601



GRIP DETAIL



**Rubber Grip Reins Loop Ends**

Zilco PVC reins with loop ends and 19mm (5/8") large pimple rubber grips. 140cm (55") Overall length.

● Black 205021



**Gymkhana Nylon Loop Reins**

21mm (7/8") woven nylon reins with loop ends. Machine washable. 135cm (53") Overall length.

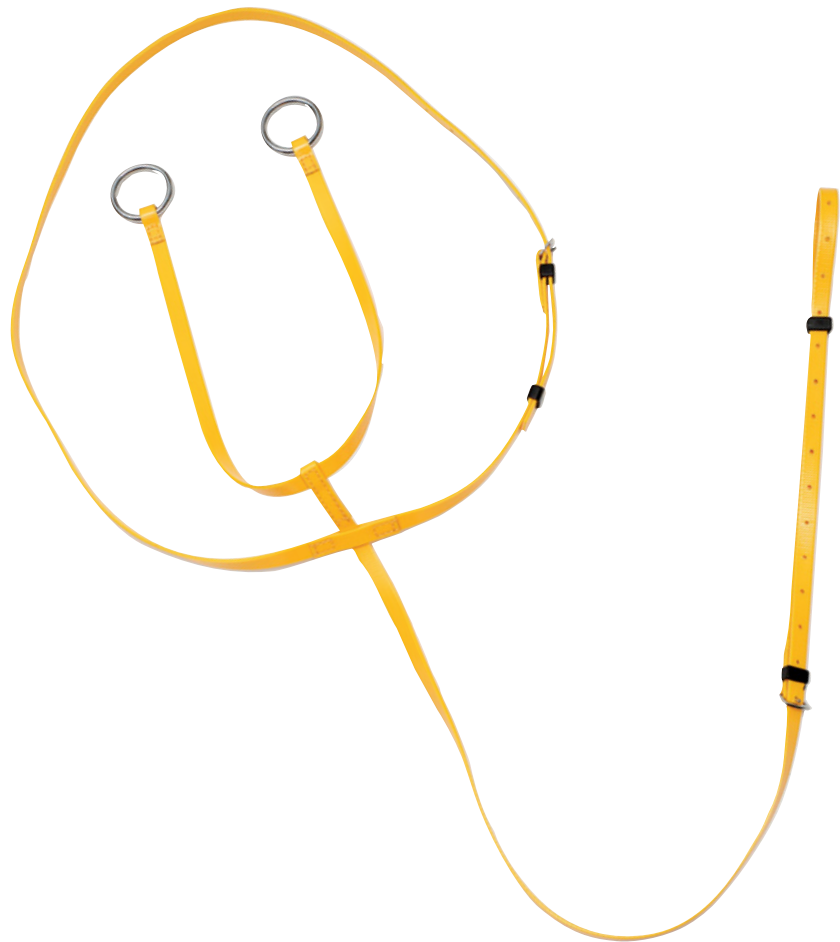
- Black 204301
- Blue 204302
- Brown 204303
- Purple 204306
- Red 204307



**Gymkhana Polocrosse Reins**

Two tone woven nylon reins with white rubber hand grip and trigger snap ends. Great for sporting days and polocrosse. Adjustable length.

- Black/White 204511
- Blue/White 204512
- Purple/White 204516
- Red/Black 204517



**13mm Running Martingale**

Made from 13mm (1/2") lightweight coated webbing and features stainless steel fittings.

- Black 675011
- Dark Blue 675012
- Yellow 675014
- Red 675017
- White 675018



**Training Running Martingale**

Leather-like, matt finish strapping. Exerts downward pressure on the mouth if the horse lifts it's head above the angle of control.

- Brown 675183



**Running Martingale**

Made from Zilco synthetic strapping for flexibility retention over a large temperature range. Abrasion, tear and crack resistance with leather look finish. To match Eventing bridle (page 17).

- Black - Pony 915731
- Black - Cob 915741
- Black - Full Size 915751



**Breastplate Pressure Pad**

Designed to fit on a variety of breastplates, either at the chest, or the shoulder (in the case of 5 point designs). Made from Zilco's durable waffle outer and lined with washable synthetic fleece.

197180



**Bridle Relief Pad Gel Lite**

Synthetic leather padded with Gel-lite impact absorption material. Touch tape straps attach to the bridle head or noseband to dissipate pressure points. 200mm x 45mm.

197200



**Noseband Relief Pad Gel Lite**

Synthetic leather padded with Gel-lite impact absorption material. Touch tape straps attach to the noseband to dissipate pressure points. 150mm x 45mm.

197199



**Zilco Flash Converter**

Convert any cavesson noseband to a hanoverian. Simply fold the converter over the noseband and thread the flash strap through. Flash strap not included.

413061



**Conway Buckle**

Stainless steel. 13mm (1/2").  
980902



**Snap Hook**

Square eye. Stainless steel. 25mm (1").  
984530



**Spring Snap**

Flat tongue. Stainlesssteel.  
13mm (1/2") 984052  
16mm (5/8") 984053



**Square Eye Rein Snap**

For quick release when attached to bit. Stainless steel.  
19mm (3/4") 984517  
25mm (1") 984519

**Training Hanoverian Noseband**

Made from 12mm (1/2") synthetic strapping that is softer on the hands and has a matt finish and more leather-like appearance. The cavesson features a 25mm (1") nose that is fully lined, with a 12mm flash strap and soft, colour coordinated keepers with stainless steel fittings. One Size to fit Thoroughbreds.

● Brown 197180

# BITS



## Chrome Plated Steel Cheek Hackamore

Chrome plated steel cheeks. The fleece lined leather noseband will adjust to fit most horses. A gentle action hackamore.

124310



## Stainless Steel with PVC Nose Hackamore

Padded contoured design with PVC waffle lining to create a gentle action hackamore that works on the pressure points of the face, nose & chin.

124315



## "S" Hackamore

The "S" shaped cheek reduces the severity of this hackamore as compared with the standard model. The cheek shape also allows easier drinking and eating when bridled.

124350



## Stainless Steel Flower Hackamore

The unique cheek design allows for multiple adjustment to increase or decrease poll pressure.

124380



## Padded Hackamore Nosepiece

With padded, contoured waffle lining

124401



## Jointed Mouth Pelham

A traditional style jointed mouth.

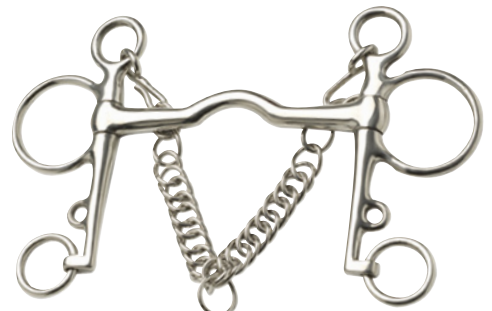
Mouth Size	Mouth Thick	Cheek Length	
10cm	12mm	125mm	121922
11.5cm	12mm	125mm	121924
12.5cm	12mm	140mm	121926
14cm	12mm	150mm	121928



## Mullen Mouth Pelham

A softer action for horses who resist the "nutcracker" action of a jointed pelham.

Mouth Size	Mouth Thick	Cheek Length	
11.5cm	13mm	125mm	121934
12.5cm	13mm	140mm	121936
14cm	13mm	150mm	121938



## Port Mouth Pelham

The low port of a Cambridge mouthpiece allows room for the horse's tongue.

Mouth Size	Mouth Thick	Cheek Length	
11.5cm	12mm	140mm	121944
12.5cm	12mm	140mm	121946
14cm	12mm	140mm	121948



**Port Mouth Kimblewick**

Slotted Cheek - allows the rider to alter rein position, thus increasing or decreasing the curb action.

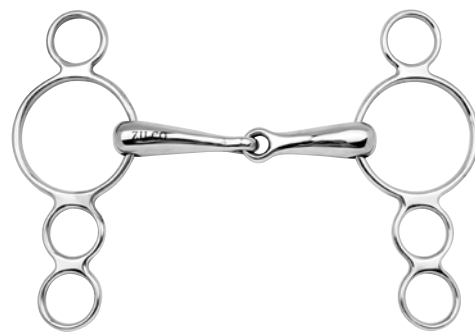
Mouth Size	Mouth Thick	Cheek Length	
11.5cm	14mm	100mm	121664
12.5cm	14mm	100mm	121666
14cm	14mm	100mm	121668



**Jointed Mouth Kimblewick**

Slotted cheek - allows the rider to alter rein position, thus increasing or decreasing the curb action.

Mouth Size	Mouth Thick	Cheek Length	
11.5cm	12mm	100mm	121644
12.5cm	12mm	100mm	121646
14cm	12mm	100mm	121648



**Pessoa Gag Bit**

3 ring choices for competing or training.

Mouth Size	Mouth Thick	Cheek Length	
12.5cm	21mm	185mm	123556
14cm	21mm	185mm	123558



**Flexible Mouth Pelham**

Soft, flexible rubber for horses with sensitive mouths.

Mouth Size	Mouth Thick	Cheek Length	
12.5cm	21mm	140mm	121916



**TPU Mouth Pelham**

Ideal for young or sore & sensitive mouthed horses.

Mouth Size	Mouth Thick	Cheek Length	
12.5cm	15mm	100mm	121906
14cm	15mm	100mm	121908



**Wonder Gag Bit**

Double joint prevents the harsh "nutcracker" action. Lozenge is copper coated stainless steel.

Mouth Size	Mouth Thick	Cheek Length	
12.5cm	13mm	188mm	123156



**Full Cheek Eggbutt**

The full cheeks prevent the bit being pulled through the mouth.

Mouth Size	Mouth Thick	Cheek Length	
11.5cm	15mm	165mm	123534
12.5cm	15mm	165mm	123536
14cm	15mm	165mm	123538



**FM (Fulmer) Bit**

For training young horses. Loose rings give more movement and full cheeks prevent pinching and provide lateral control.

Mouth Size	Mouth Thick	Cheek Length	
11.5cm	14mm	165mm	123564
12.5cm	14mm	165mm	123566
14cm	14mm	165mm	123568



**Tom Thumb Stainless Steel**

A very popular bit with loose rings and jointed mouthpiece.

Mouth Size	Mouth Thick	Cheek Length	
9cm	13mm	45mm	123611
10cm	13mm	50mm	123612
11.5cm	13mm	50mm	123614
12.5cm	13mm	50mm	123616
14cm	13mm	50mm	123618



**Light Round Ring Eggbutt**

A lightweight mouthpiece for sensitive horses.

Mouth Size	Mouth Thick	Ring Size	
12.5cm	15mm	70mm	123176
14cm	15mm	70mm	123178



**Hollow Mouth Flat Ring Eggbutt**

Thick Mouth, gentle bit suitable for soft mouthed horses.

Mouth Size	Mouth Thick	Ring Size	
12.5cm	23mm	70mm	123221
14cm	23mm	70mm	123222



**Thin Mouth Flat Ring Eggbutt**

Very popular all round bit.

Mouth Size	Mouth Thick	Ring Size	
10cm	15mm	70mm	123232
11.5cm	15mm	70mm	123234
12.5cm	15mm	70mm	123236
14cm	15mm	70mm	123238



**Blue Training Eggbutt**

Neat eggbutt rings and lozenge shaped joint to sit flat on tongue. Designed to discolour quickly with use and increase salivation and acceptance of the bit.

Mouth Size	Mouth Thick	Ring Size	
12.5cm	14mm	40mm	126006
14cm	14mm	40mm	126008



**Light Mouth Dee**

One of the most popular flat racing bits with a very lightweight mouthpiece.

Mouth Size	Mouth Thick	Ring Size	
12.5cm	12mm	70mm	121025



**TPU Mullen Mouth Ring Snaffle**

TPU offer softness and flexibility of rubber, yet more durable and harder wearing. Ideal for young or sore & sensitive mouthed horses.

Mouth Size	Mouth Thick	Ring Size	
12.5cm	15mm	65mm	123906
14cm	21mm	65mm	123908



**Flexible Rubber Snaffle**

Soft rubber mouthpiece, ideal for horses with sore mouths.

Mouth Size	Mouth Thick	Ring Size	
12cm	21mm	65mm	123914
13.5cm	21mm	65mm	123916



**Hollow Mouth**

Lightweight but thick mouthpiece. Ideal for sensitive mouths.

Mouth Size	Mouth Thick	Ring Size	
12.5cm	19mm	65mm	123936
13.5cm	19mm	65mm	123937
14cm	19mm	65mm	123938



**Curved Mouth Snaffle**

Curved mouth piece designed to sit more comfortably in the horse's mouth and offer more tongue room.

Mouth Size	Mouth Thick	Ring Size	
12.5cm	10mm	65mm	123996
14cm	10mm	65mm	123998



**Sweet Iron Thick Mouth Copper Inlay**

Single jointed sweet iron mouth with copper inlay. Use of both sweet iron and copper encourages acceptance.

Mouth Size	Mouth Thick	Ring Size	
12.5cm	14mm	65mm	124116



**Sweet Iron Snaffle Fine Mouth**

A fine mouth snaffle, with strong sweet iron that encourages salivation and acceptance of the bit as it slowly oxidises or rusts.

Mouth Size	Mouth Thick	Ring Size	
13.5cm	10mm	65mm	124126



**Thick Mouth Training Bit**

Thick mouth stainless steel ring bit with lozenge shaped joint that sits flat on the tongue with rein pressure.

Mouth Size	Mouth Thick	Ring Size	
11.5cm	21mm	65mm	124154
12.5cm	21mm	65mm	124156
14mm	21mm	65mm	124158





**Loose Ring Flexible White**

Durable, non-allergenic polyurethane mouth, strengthened with stainless steel cable.

Mouth Size	Mouth Thick	Ring Size	
12.5cm	20mm	65mm	127066
14mm	20mm	65mm	127068



**Soft Gel Curb Chain Cover**

Designed to help prevent chafing of the horse's chin.  
132530



**Soft Gel Bit Guards**

Easy to fit, offer a soft alternative to traditional bit guard designs.  
132532



**23mm Stretch Gel Rein Stops**

Used with ring (running) martingales to prevent the ring travelling up to the bit where it can get caught, and offering more control. Sold as a pair.  
196512





**Zilco 25mm PN Headstall**

Flexible over high temperatures, with increased abrasion resistance. Sensitive feel while resistant to tears and cracks. Solid brass fittings. Fully washable.

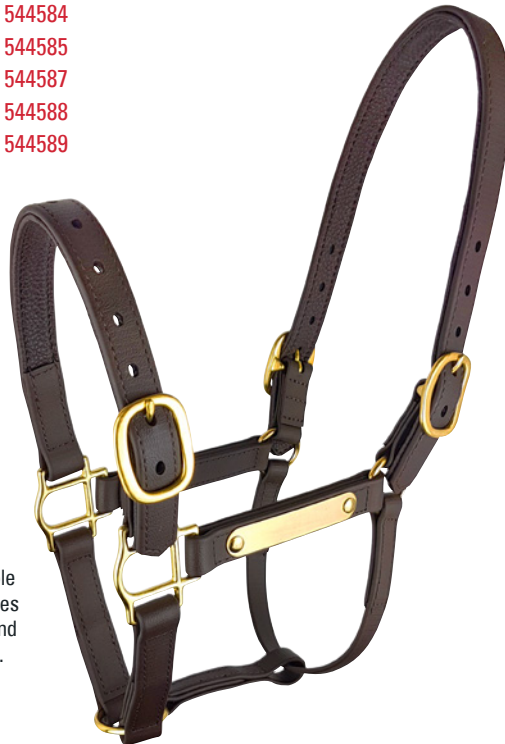
	Cob	Full Size
● Black	544561	544581
● Dark Blue	544562	544582
● Yellow	544564	544584
● Dark Green	544565	544585
● Red	544567	544587
○ White	544568	544588
● Royal Blue	544572	544589



**Zilco 19mm PN Headstall**

Same as the 25mm model, more suited to horses with a delicate head shape for a finer look. Solid brass fittings Popular for yearling sales.

	Pony	Cob	Full Size
● Black	544611	544641	544671
● Dark Blue	544612	544642	544672
● Red	544617	544647	544677
○ White	544618	544648	544678



**PN Deluxe Halter**

High class Matt finish PN material has the look of leather without the maintenance. Double buckle head piece, Ideal for sales yard or presentation. Screws and nameplate also sold separately.

Cob	544713
Full	544753

**Brass Chicago Screws** 547255     **Brass Nameplate** 547251



**PN Lead Solid Brass Chain**

Strong 2.4m PN lead with hand loop. 60cm Solid Brass chain. 547031



**Compositi Premium Stirrups**

Lightweight, and extremely strong, made with innovative materials that make it effective and comfortable.

Small: 10cm (4"), Large: 12cm (4 3/4")

	Small	Large
● Black	891301	891341
● Purple	891306	891346
● Red	891307	891347
● Raspberry	891309	891349
● Royal Blue	891312	891352
● Lime	891315	891355
● Pink	891316	891356
● Orange	891317	891357



**Compositi 2-Bar Stirrups**

This strong but lightweight 2 bar stirrup is made from super tough resins, produced by DuPont du Nemours, who guarantee its properties.

Small: 9 1/2cm (3 3/4"), Large: 11 1/2cm (4 1/2")

	Small	Large
● Black	891491	891493
● Royal Blue	891442	891472
● Red	891447	891477
● Light Blue	891452	891482
● Pink	891457	891487



**Compositi Reflex Stirrups**

Made from one of the toughest high-tech polymers produced by DuPont. The tread is positioned on a shock absorption layer to reduce tension in knees and ankles while riding. The large sole provides increased contact and comfort, and has an anti-skid surface for better grip.

11 1/2cm (4 1/2")

● Black	891591
● Brown	891593

**Compositi Matrix Toe Cage**

Strong, durable toe cage that incorporates a stirrup tread. Fits any 2 bar stirrup and attaches with two locking nuts, designed to prevent the rider's foot from slipping through the stirrup. Stirrups not included.

Small suits: 9 1/2cm (3 3/4") stirrups, Large suits: 11 1/2cm (4 1/2") stirrups

	Small	Large
● Black	905101	905103
● Royal Blue	905132	905162
● Red	905137	905167
● Light Blue	905142	905172
● Pink	905147	905177



**Zilco PVC Stirrup Straps**

- 25mm (1") Width
- 142cm (56") Length
- Black

903550

**Zilco PN Stirrup Straps**

- 25mm (1") Width
- Black

	● Black	● Brown
112cm (46")	903510	903511
127cm (50")	903515	903516
142cm (56")	903520	903521
160cm (62")	903530	-

**Zilco Classic Stirrup Straps**

- PU material
- 25mm (1") Width
- Black

125cm (49")	903594
145cm (57")	903596
155cm (61")	903598
165cm (65")	903600



**Oscar Lite Sports Helmet**

- Modern, matt finish single-piece shell
- Removable mesh lining for increased airflow and ease of cleaning
- Sleek channel design for optimum airflow and cooling
- Unique dial adjustment to help achieve the perfect fit
- Light weight at only 430g

S 48-52 385254  
 M 52-56 385255  
 L 57-61 385256



**Oscar Junior Helmet**

- Economically priced and packed with safety features, perfect for growing heads
- Removable mesh lining for increased airflow and ease of cleaning
- Smooth, seamless design with modern matt finish
- Unique dial adjustment to help achieve the perfect fit
- Light weight at only 300g
- One Size - Fits 49cm - 56cm

○ White 385053  
 ● Pink 385063



**Oscar Select Helmet**

- Matt finish with grey piping
- Removable mesh lining for increased airflow and ease of cleaning
- Sleek channel design for optimum airflow and cooling
- Unique dial adjustment to help achieve the perfect fit
- Reflective piping for added safety
- Each helmet comes individually packaged in an attractive display box.

	S 48-52	M 52-56	L 57-61
● Black	385304	385305	385306
● Navy	385314	385315	385316



**Rose Gold Oscar Sentry Helmet**

- Matt black shell and low sheen rose gold accents
- Removable mesh lining for increased airflow and ease of cleaning
- Sleek channel design for optimum airflow and cooling
- Unique dial adjustment to help achieve the perfect fit
- Includes storage pouch for protection

M 52-56 385425  
 L 57-61 385426



**Note:** It is the Rider's responsibility to ensure that the helmet they choose is approved for use by the organisation under which they are riding.



**Oscar Vibe Helmet**

- Sporty silver accents
- Removable mesh lining for increased airflow and ease of cleaning
- Sleek channel design for optimum airflow and cooling
- Unique dial adjustment to help achieve the perfect fit
- Reflective piping for added safety
- Each helmet comes individually packaged in an attractive display box.
- Includes storage pouch for protection

	M 52-56	L 57-61
● Blue	385525	385526
● Bronze	385535	385536
● Red	385575	385576



**Oscar MM Helmet**

- The modern matt metallic single-piece shell features a sleek channel design for optimum airflow and cooling
- The dial adjustment at the back offers a customised fit
- The removable mesh lining allows increased airflow and ease of cleaning
- Weights start at only 430g

	S 48-52	M 52-56	L 57-61
● Blue	385624	385625	385626
● Teal	385654	385655	385656
● Fuchsia	385674	385675	385676



**Oscar Sentry Helmet**

- Shiny exterior.
- Removable mesh lining for increased airflow and ease of cleaning
- Sleek channel design for optimum airflow and cooling
- Unique dial adjustment to help achieve the perfect fit
- Includes storage pouch for protection

	M 52-56	L 57-61
● Black	385405	385406
○ White	385415	385416



**Zilco Cap**

Featuring 3D embroidery, great for promotional and sponsorship items. Structured peak and touch-tape strap at the back to ensure optimum comfort and fit.

● Black	381031
● Red	381037

**Note:** It is the Rider's responsibility to ensure that the helmet they choose is approved for use by the organisation under which they are riding.



(A)

### Puffer Pad

Made with a cotton drill outer and 800g polyester fibre fill for superior padding.

Standard size:

65cm wide x 48cm drop.

Long Size:

65cm wide x 57cm drop.

#### A Standard Size

- Royal Blue 835702
- Burgundy 835710
- Black 835711
- Navy 835712
- Forest Green 835715
- Purple 835716
- Red 835717
- Sky Blue 835719

#### B Long Size

- Black 835721
- Navy 835722
- Forest Green 835725
- Red 835727
- Royal Blue 835732

(B)



### Puffer Pad with Pockets

Popular for long distance riding, trail rides etc. The cotton outer and 800g polyester fibre fill inner offers comfort to both horse and rider, while the fibre fill will not absorb sweat or water, making it quick drying. Features a 600 denier polyester pocket on each side - perfect for carrying snacks and necessities.

65cm wide x 48cm drop

- Black w/ Charcoal Binding 835741
- Navy w/ Sky Blue Binding 835742





**Airflow Endurance Saddle Pad**

Made from a bonded and padded mesh top, with a breathable porous polyester fibre filling. The rubber mesh lining not only allows for better airflow, but also grips, keeping both the saddle and saddlecloth in place.

Measures 58.5cm wide x 51cm drop

837412



**Gel-Lite Pad Standard**

Zilco Gel-Lite pads have the impact and pressure absorption properties of traditional gel pads, but are up to 80% lighter. They can be used under all types of saddles - including race & exercise saddles, and are machine washable.

The Standard pad has one layer of Gel-Lite throughout. It weighs approximately 530g

831002



**Gel-Lite Pad Rear Lift**

The Rear Lift pad has one layer of Gel-Lite throughout, with a removable insert that provides double thickness at the back. It is designed to correct the balance of saddles that tip back. Weighs approximately 640g

831004



**Gel-Lite Pad Front Lift**

The Front Lift pad has one layer of Gel-Lite throughout, with a removable insert that provides double thickness at the front. It is designed to correct the balance of low fitting saddles. Weighs approximately 690g

831006



**Gel-Lite Pad Deluxe**

The Deluxe pad has one layer of Gel-Lite throughout, so it can be used as a standard Gel-Lite pad. Includes removeable inserts at both front and back, which offers both front and rear lift options. The complete pad weighs approximately 870g.

831008



**EVA Foam Saddle Pad**

Made from EVA - a light material which is similar to that used in orthotics. Fully moulded and anatomically shaped, designed to prevent pressure points under the saddle.

831012

# GIRTHS

## Tube

### Lonsdale Girth

Black Ezi-care PVC anti-gall waffle material, revolutionary stainless steel buckle with uncrushable solid roller pin and centre dee for a martingale attachment (which can be tucked away if not required).

45cm	354018
50cm	354020
55cm	354022
60cm	354024
65cm	354026
70cm	354028
75cm	354030
80cm	354032
85cm	354034



## Fleece

### Lonsdale Girth

Ergonomically shaped to provide comfort for the horse. It features a luxurious synthetic fleece lining with diamond quilted cotton drill outer and stainless steel buckles.

55cm	353822
60cm	353824
65cm	353826
70cm	353828
75cm	353830



### Endurance Girth Loop

For use with girths that have not been fitted with a centre dee. Slips over the girth with ring facing forward so that breastplates / martingales may be fitted.

269901



### Wool Girth Tube

Wool, knitted on a polyester backing, suits girths up to 100mm wide.

60cm	340026
80cm	340028



### Fleece Girth Tube 75cm

Synthetic fleece, suits girths up to 100mm wide.

● Black	340011
○ White	340018



### PVC Girth Tube 85cm

PVC Waffle material, suits girths up to 100mm wide.

340041







**Pommel Saddle Bag**

Double pair of neat bags which clip to the pommel dees of saddle. Suitable for wallet, sunglasses, snacks and other personal items.

101531



**Insulated Combo Bag**

Insulated side bags to help keep food and drinks cold. The middle bag will easily fit a change of clothes or oilskin coat. Black with green trim.

101045



**Drink Bottle Saddle Bag**

Clips to the "D" on most saddles. Includes one 600ml drink bottle.

101051



**A**



**Double Drink Bottle Bag**

Comes with two 600ml plastic drink bottles in an insulated bag on one side, and two zip up pockets on the other.

101061



**B**

**Zilco Canvas Gear Bag**

Heavy canvas gear bag with red trim and handles. The handles wrap all the way around the bag for added strength. Features a hard-wearing nylon zip with metal pull-tab.

**A** XL 75cm x 36cm x 36cm 101105

**B** XXL 90cm x 50cm x 50cm 101107



**Waterproof Gear Bag**

Made from heavy duty waterproof vinyl with strong webbing handles that wrap all the way around and touch tape comfort grip closure. Includes a D-ring which the zip can be padlocked for security when travelling. Measures: 35cm x 45cm x 85cm.

101125



**Ice Hock Boots**

Helps reduce heat and swelling at the front and back of the hocks. Individual pillows of gel help ensure flexibility and even coverage of cold when frozen.

With zip up carry bag, each measures 43cm x 30cm when laid flat. Set of 2.

399060



**Zilco Ice Boots**

Prevents injury and significantly reduces swelling and soreness, to speed up recovery. Machine washable, fleece lined boots, with removable inserts.

399051



**Ice Boot Removable Insert**

Sold as each.

399050



**Fleece Saddle Cover**

Made from thick polar fleece, suitable for protecting saddles from dust and scratches when not in use. Elasticated band around the edge holds the cover in position and has been cut to a superior pattern, giving a more tailored fit than other designs. Saddle not included.

101481



**Plastic Saddle Cover**

Made from semi-transparent plastic, suitable for protecting your saddle from dust and scratches when not in use. Features a slot to feed through stirrup straps - making it suitable for protecting leather saddles when riding in the rain. Saddle not included.

101500



**Jodz Airmesh Gloves**

Synthetic suede palm with polyester air mesh back that really breathes. A great choice for summer. Sold as a pair.

S 292454

M 292455

L 292456



**Jodz Airmesh Chapettes**

Lightweight, ventilated chapette ideal for summer. Featuring elasticated rear panel for an improved fit, and airmesh fronts for better airflow.

XS 231283

S 231284

M 231285

L 231286

XL 231287



**Zilco International Pty Ltd**

PO Box 126 Concord West,  
NSW 2138  
AUSTRALIA  
Tel: (02) 8765 9999  
Fax: (02) 8765 9977  
Email: sales@zilco.com.au

**Zilco NZ Ltd**

PO Box 19808 Woolston,  
Christchurch 8241  
NEW ZEALAND  
Tel: (03) 381 0270  
Fax: (03) 381 0276  
Email: sales@zilco.co.nz

**Zilco Europe Ltd**

Unit 6/7 The Dairy  
Bloxham Grove Farm  
Banbury, Oxfordshire, OX15 4LL  
ENGLAND  
Tel: +44 (0) 1844 338 623  
Email: sales@zilcoeuropa.com



Available at your nearest Zilco stockist: